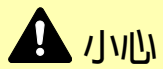


更換碳粉匣

當觸控面板顯示 *碳粉已用完* 時，請更換碳粉匣。

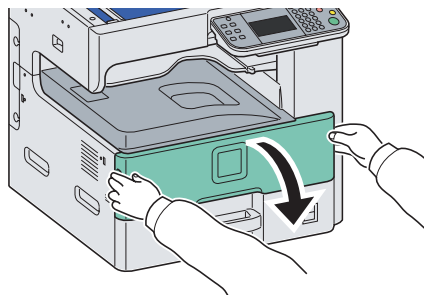


小心

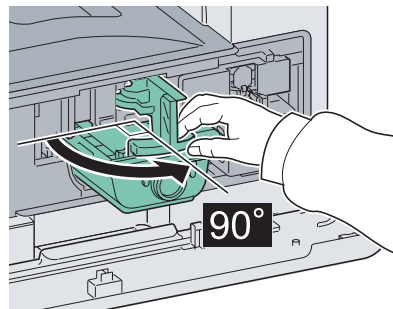
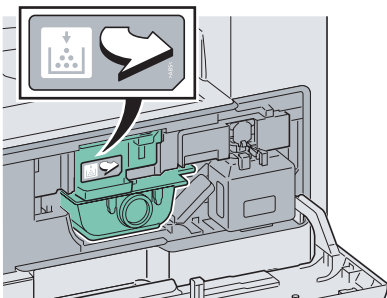
請勿試圖焚燒碳粉匣或者碳粉回收盒。飛濺的火花可能會引起灼傷。

1 取下舊的碳粉匣。

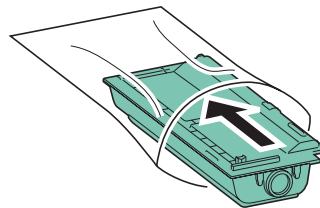
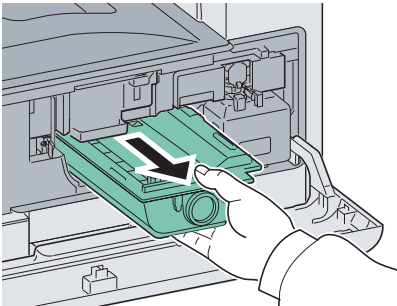
1



2

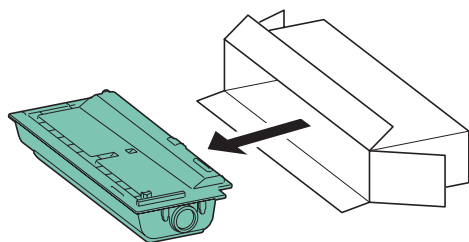


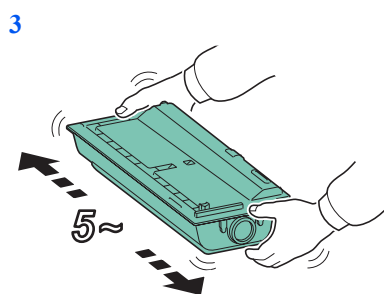
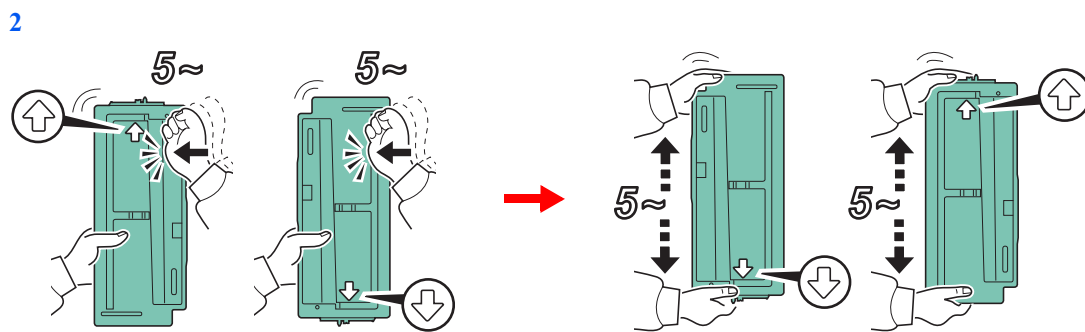
3



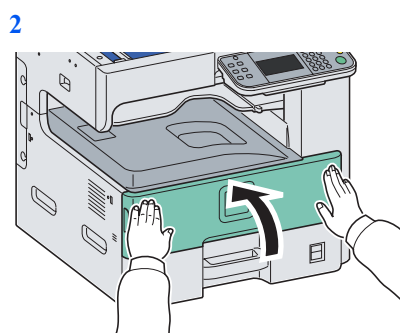
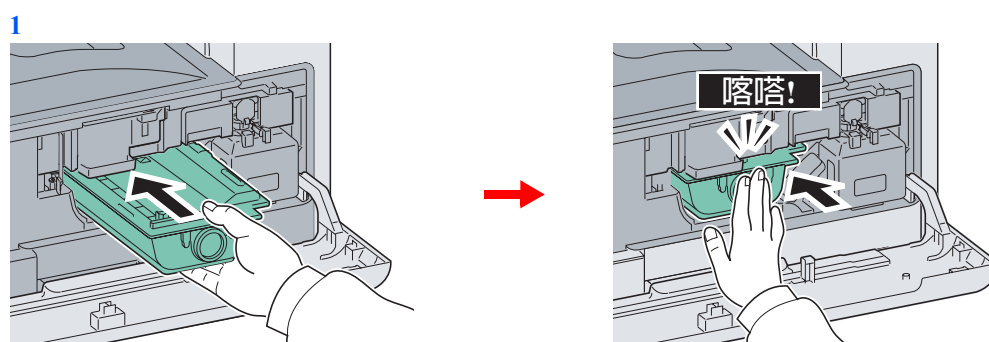
2 準備新的碳粉匣。

1





3 安裝新的碳粉匣。



注意

將用完的碳粉匣和碳粉回收盒交還給經銷商或維修服務人員。他們將根據相關的法律法規回收或處理收集的碳粉匣和碳粉回收盒。